



AUSBLICK SKI CLUB COVID-19 OPERATING PLAN

Version 1.5 December 21, 2021

Abstract

This document outlines the policies, protocols, precautions and expectation for all members, guests and employees of Ausblick Ski Hill

This is a fluid and dynamic situation. This document will be updated as appropriate to reflect current situation.

This page left blank intentionally.

Overview

COVID-19 continues to require actions and practices to protect the safety and welfare of Club members and employees. On March 24, 2021, Waukesha County updated its large gathering recommendation in the context of the COVID-19 pandemic. The guidelines advise that indoor venues may host events with no capacity limits when CDC guidelines are following. However, since this date, most of the population has been given the opportunity to obtain COVID-19 vaccinations and the risk of COVID-19 infection has decreased.

This said, we will be asking all members to follow specific practices to be respectful of fellow members and ensure our organization remains as safe and comfortable place for all. Although we are a private club, we remain committed to common guidelines. Our goal is to ensure all can enjoy our snow sports and our club while reasonably protecting the health and safety of our members and staff.

General

Health Agreement - At the time any Member obtains his annual pass, you will be required to agree on behalf of yourself, any persons under your membership eligible to obtain an annual pass, and any guest, that at any time you or said person or guest use the Ausblick, Inc. facility that you or said person or guest: (i) does not have COVID-19, (ii) does not have symptoms of COVID-19 including fever, new or worsening dry cough, shortness of breath, trouble breathing, sore throat, gastrointestinal symptoms, including nausea, diarrhea, or vomiting, or recent loss of taste or smell, and (iii) has not been exposed to any individual who has COVID-19 or its symptoms within 14 days of the use of the Ausblick, Inc. facilities, and agrees to immediately to notify Ausblick, Inc. of such an event. In the event you breach this agreement you agree to indemnify, defend and hold harmless Ausblick, Inc., including its officers, directors, employees and ski patrollers, from any and all claims, suits, lawsuits, costs, expenses (including reasonable attorneys fees), liabilities, judgments and damages, arising out of or relating to a breach of said agreements.

At the time any adult guest of a member, whether he obtains a daily pass or not, uses the Ausblick, Inc. facilities, said guest will be required to agree that: (i) he does not have COVID-19, (ii) he does not have symptoms of COVID-19 including fever, new or worsening dry cough, shortness of breath, trouble breathing, sore throat, gastrointestinal symptoms, including nausea, diarrhea, or vomiting, or recent loss of taste or smell, and (iii) he has not been exposed to any individual with COVID-19 or its symptoms within 14 days of the issuance of the daily pass or his use of the Ausblick, Inc. facilities, and agrees to immediately to notify Ausblick, Inc. of such an event. In the event he breaches this agreement he agrees to indemnify, defend and hold harmless Ausblick, Inc. including its officers, directors, employees and ski patrollers, from any and all claims, suits, lawsuits, costs, expenses (including reasonable attorneys fees), liabilities, judgments and damages, arising out of or relating to a breach of said agreements.

If sick, please stay home – as we come upon cold and flu season, combined with COVID-19, anyone displaying any symptoms of illness should stay home.

Face covering –Members and guests who are not vaccinated are required to wear a mask when indoors. Members and guests who are vaccinated are not required to wear a mask when indoors. Members will

not be required to show proof of vaccination. Members are not required to wear a mask outdoors. Signage at the lodge will reflect these requirements. Snow sports school and ski patrol are authorized to adopt their own COVID-19 protocols providing they are not less restrictive than the Club's COVID-19 policy as outlined above.

Lodge

Ski locker room – We ask that folks retrieve/store equipment quickly to ensure we can maintain social distancing in the aisles between lockers.

Tables – All four top tables will be returned to the lodge. They will be placed in designated locations and not allowed to be grouped together. We will continue the practice of no tablecloths. The white six top tables will be moved into the yurts that will continue to be available for all members to use.

Kitchen/food lockers – Kitchen will be open for use to members. Kitchen shall only be used if members follow proper cleaning protocols. Microwaves/pizza ovens/oven/grill shall be cleaned by members after each use. Members are responsible for cleaning/sanitization of their food locker.

Ski Patrol care room – The patrol will continue detailed practices that guide patroller and room practices in event of caring for anyone exposed to COVID-19. This includes those needing care to wear a mask, outlines specific cleaning and sanitization processes.

Cleaning and sanitization

- Tables/chairs: Cleaning supplies will be provided – you are to clean your table before and after use. If members refuse to follow cleaning practices, you may be asked to forfeit use of the table.
- Facility/Restrooms: lodge personnel will follow a regular cleaning schedule of frequently touched surfaces, including doorknobs and handles, computer keyboards, light switches.
- Sanitization stations will be provided at each entrance.

Equipment Storage – We continue to have limited space within the lodge for equipment storage. We ask members to consider storing equipment bags in hallway cubbies or in your vehicles.

On the Hill

Riding lifts/lift line – No masks or social distancing required; however, it remains prudent to social distance. Members will be asked to self-group and load chair with their party.

Yurt – Reminder that this is for sole use of snow sports and not general membership. Ski school will follow the regular cleaning and sanitization schedule between lessons and adopt other protocols in accordance to Club policy.

Parking Lot

If you are able to do so, consider booting up in parking lot. Additionally, tailgating continues to be an alternative to the lodge. We request ask all to remain vigilant of traffic.

Club Personnel

Face coverings – Employees working outside are not required to wear a mask. Employees working indoors shall either submit proof of vaccination to management or they will be required to wear a mask.

Self-health checks – Each employee will complete a daily self-health check to affirm they have no symptoms and have not been knowingly exposed to COVID-19.

Exposure/symptoms – If any employee shows symptoms or has been exposed, they will not return to work for 14 days or until a negative test result is received.

Exposure Plan

In the event management acquires knowledge that a Member, guest, employee or other visitor has COVID-19 during use of any Ausblick, Inc. facilities, the lodge, tent or other facility, the areas will be cleaned and disinfected.

These guidelines are dynamic and implemented to protect the health and welfare of all members. Being respectful of each member’s circumstance is expected as we support each other during this time. We will continue to monitor and evolve our practices as needed.

Figure 1 – Copy of Employee Daily Self-Health Evaluation Form

Employee Daily Self-Health Evaluation Form – COVID-19

This form is to be completed and submitted to your manager prior to each work shift.

In the past 72 hours (3 days), have you experienced (place an “X” in the column that represents your answer):

YES	NO	SYMPTOM
		Fever of 100.4 or higher
		New or worsening dry cough
		Shortness of breath or difficulty breathing
		New loss of taste or smell
		Gastrointestinal symptoms, including nausea, diarrhea or vomiting
		Sore throat

If you answer YES to any of these symptoms listed above, you cannot report to work. We encourage you to contact your medical provider for direction and consider. Please see attached guidelines.

In the past 14 days, have you:

YES	NO	SYMPTOM
		Had close contact with an individual diagnosed with COVID-19?

If you answer YES, you cannot report to work. Please contact your manager and review attached guidelines.

By signing your name below, you certify that the information recorded on this form is true and correct.

Name

Date

Falsification of information on this form may result in disciplinary action.

Figure 2 – Employee COVID-19 Protocol

Ausblick Ski Club COVID-19 Protocol - Employee

Version 1.2 12-02-21

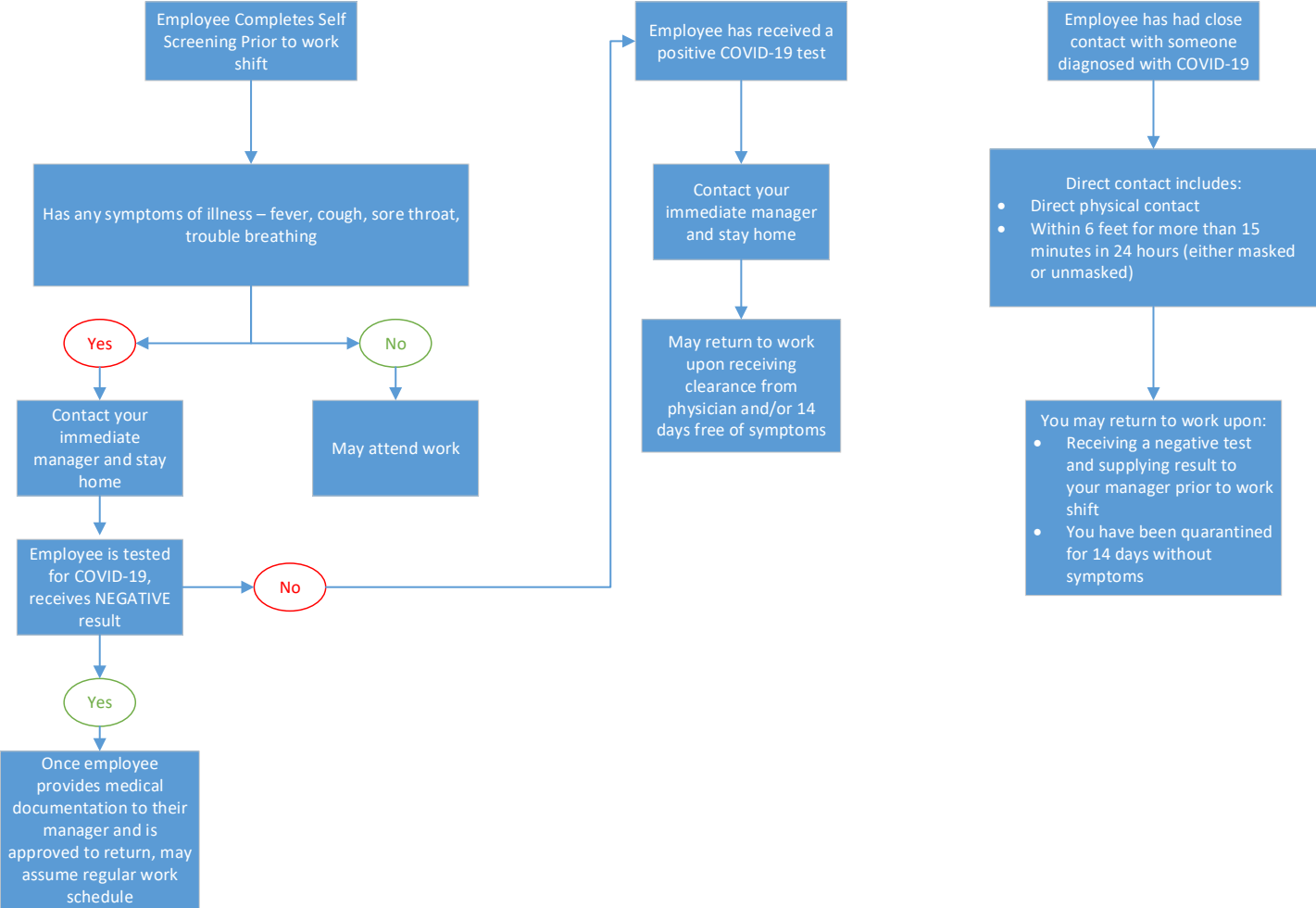


Figure 3 – Member/Guest COVID-19 Protocol

Ausblick Ski Club COVID-19 Protocol - Member
Version 1.2 12-02-21

