



AUSBLICK SKI CLUB COVID-19 OPERATING PLAN

Version 1.5 October 30, 2020

This document outlines the policies, protocols, precautions and expectations for all members, guests and employees of Ausblick Ski Club. This is a fluid and dynamic situation. This document will be updated as appropriate to reflect current situation.

Ausblick Inc.

This page left blank intentionally.

Overview

Our sport naturally lends itself to social distancing and appropriate safety measure simply by the nature of it. This said, we will be asking all members to follow specific practices to be respectful of fellow members and ensure our organization adheres to local, state, and federal guidelines. Although we are a private club, we remain committed to all guidelines.

Our goal is to ensure all are able to enjoy our snow sports and our club while reasonably protecting the health and safety of our members and staff. We have spent the last months reviewing guidance provided by the Center for Disease Control (CDC), National Ski Area Association (NSAA), National Ski Patrol, the medical community, and practices of ski areas across the country and locally

General

Health Agreement - At the time any Member obtains his annual pass, you will be required to agree on behalf of yourself, any persons under your membership eligible to obtain an annual pass, and any guest, that at any time you or said person or guest use the Ausblick, Inc. facility that you or said person or guest: (i) does not have COVID-19, (ii) does not have symptoms of COVID-19 including fever, new or worsening dry cough, shortness of breath, trouble breathing, sore throat, gastrointestinal symptoms, including nausea, diarrhea, or vomiting, or recent loss of taste or smell, and (iii) has not been exposed to any individual who has COVID-19 or its symptoms within 14 days of the use of the Ausblick, Inc. facilities, and agrees to immediately to notify Ausblick, Inc. of such an event. In the event you breach this agreement you agree to indemnify, defend and hold harmless Ausblick, Inc., including its officers, directors, employees and ski patrollers, from any and all claims, suits, lawsuits, costs, expenses (including reasonable attorneys fees), liabilities, judgments and damages, arising out of or relating to a breach of said agreements.

At the time any adult guest of a member, whether he obtains a daily pass or not, uses the Ausblick, Inc. facilities, said guest will be required to agree that: (i) he does not have COVID-19, (ii) he does not have symptoms of COVID-19 including fever, new or worsening dry cough, shortness of breath, trouble breathing, sore throat, gastrointestinal symptoms, including nausea, diarrhea, or vomiting, or recent loss of taste or smell, and (iii) he has not been exposed to any individual with COVID-19 or its symptoms within 14 days of the issuance of the daily pass or his use of the Ausblick, Inc. facilities, and agrees to immediately to notify Ausblick, Inc. of such an event. In the event he breaches this agreement he agrees to indemnify, defend and hold harmless Ausblick, Inc. including its officers, directors, employees and ski patrollers, from any and all claims, suits, lawsuits, costs, expenses (including reasonable attorneys fees), liabilities, judgments and damages, arising out of or relating to a breach of said agreements.

If sick, please stay home – as we come upon cold and flu season, combined with COVID-19, anyone displaying any symptoms of illness should stay home.

Face covering – Our sport naturally provides this through use of gaiters/buffs. Members are to wear face covering in the lodge, lift lines, on chairlifts or generally congregating. This includes participation in ski school. The standard exception is when eating or drinking. The use of face coverings is in accordance with federal/CDC guidelines and with current state mandates.

Lodge

Ski locker room – Fortunately, we rarely see congregations in this area. We ask that folks retrieve/store equipment quickly to ensure we can maintain social distancing in the narrow aisles between lockers.

Tables – To support social distancing, we will be removing tables from the lodge. Tables will be placed at appropriate distances and should not be moved to ensure maintenance of 6 feet social distancing in accordance with CDC guidelines. You will notice spacing marked on the floors to ensure maintenance of 6 feet social distancing between people in accordance with CDC guidelines. Tables will be limited to one per every 6 people actively eating. We encourage folks to utilize our outdoor tables. We are also researching other options including temporary shelters, and other options to facilitate boot changing and storage area to accommodate those who only need to boot up.

Kitchen/food lockers – Kitchen shall only be used if members follow proper cleaning and social distancing/face covering protocols. Microwaves/pizza ovens/oven/grill shall be cleaned by members after each use. Members are responsible for cleaning/sanitization of their food locker. We will be making configuration changes to facilitate safe use of the kitchen with social distancing although with limited capacity at any one time.

As we will have limited lodge capacity, we encourage you to bring food and beverage that can be prepared and consumed outside. Grills will be available for outside cooking.

Ski Patrol care room – The patrol has developed detailed practices that guide patroller and room practices. This includes those needing care to wear a mask, outlines specific cleaning and sanitization processes and limits number of people in patrol room to one family member or guardian only. Additional information will be posted by the patrol room door.

Cleaning and sanitization

- Tables/chairs: Cleaning supplies will be provided – you are to clean your table before and after use. If members refuse to follow cleaning practices, you may be asked to forfeit use of the table.
- Facility/Restrooms: lodge personnel will follow a regular cleaning schedule of frequently touched surfaces, including doorknobs and handles, computer keyboards, light switches.
- Sanitization stations will be provided at each entrance.

Special Events - At this time no special events or live music will be planned inside the lodge. We are assessing opportunities for outside events to support social distancing and allow all to feel comfortable to enjoy events. We will continue to assess the situation and evolve as able as guidelines and restrictions evolve.

Equipment Storage – We have limited space within the lodge for equipment storage. In support of social distancing, we ask members to consider storing equipment bags in your vehicles.

On the Hill

Riding lifts/lift line – Members will be asked to self-group and load chair with their party. Lift attendants will not require individuals to ride with those they do not know. We will be implementing social distancing while waiting in the lift lines.

Yurt – Reminder that this is for sole use of snow sports and not general membership. Ski school will follow the regular cleaning and sanitization schedule between lessons and adopt other protocols to support social distancing and use of face masks consistent with this Ausblick Ski Club COVID-19 Operating Plan.

Parking Lot

If you are able to do so, consider booting up in parking lot. Additionally, tailgating may be a great alternative to the lodge due to limited capacity. We request that groups follow social distancing protocols with non-family members and remain vigilant of traffic.

Club Personnel

Face coverings – All club personnel and ski patrol members will wear face coverings at all times in accordance with local, state and federal/CDC guidelines and with current state mandates.

Self-health checks – Each employee will complete a daily self-health check to affirm they have no symptoms and have not been knowingly exposed to COVID-19.

Exposure/symptoms – If any employee shows symptoms or has been exposed, they will not return to work for 14 days or until a negative test result is received.

Training - Employees will be trained on COVID-19 safety and cleaning/sanitization practices.

Exposure Plan

In the event management acquires knowledge that a Member, guest, employee or other visitor has tested positive for COVID-19 during the past 14 days and is presently using or present in any Ausblick, Inc. facilities (the lodge, tent, facility, garage, timing building or hill); that person will be asked to leave the premise and not return for 14 days following the "test positive" date.

Members, guests, employees and other individuals on premise displaying symptoms consistent with COVID-19 will be requested to meet with ski patrol for an assessment. Ski Patrol will advise management in the event said person displays potential COVID-19 symptoms, after which management will request the individual to leave Ausblick. All areas occupied by said individual will be promptly sanitized as a precautionary measure. Additionally, management will implement the cleaning and sanitizing protocol for all potentially compromised spaces prior to the next day of operations. This include cleaning/sanitizing of all surfaces using our hydrostatic sanitization sprayer and hand cleaning of all commonly touched items including door handles, kitchen equipment and computers.

In the event management becomes aware of any Members, guests, employee's or other visitors having tested positive for COVID-19 and contact traced back to the Ausblick, Inc. premises; management will notify membership accordingly.

Figure 1 – Copy of Employee Daily Self-Health Evaluation Form

Employee Daily Self-Health Evaluation Form – COVID-19

This form is to be completed and submitted to your manager prior to each work shift.

In the past 72 hours (3 days), have you experienced (place an “X” in the column that represents your answer):

YES	NO	SYMPTOM
		Fever of 100.4 or higher
		New or worsening dry cough
		Shortness of breath or difficulty breathing
		New loss of taste or smell
		Gastrointestinal symptoms, including nausea, diarrhea or vomiting
		Sore throat

If you answer YES to any of these symptoms listed above, you cannot report to work. We encourage you to contact your medical provider for direction and consider. Please see attached guidelines.

In the past 14 days, have you:

YES	NO	SYMPTOM
		Had close contact with an individual diagnosed with COVID-19?

If you answer YES, you cannot report to work. Please contact your manager and review attached guidelines.

By signing your name below, you certify that the information recorded on this form is true and correct.

Name

Date

Falsification of information on this form may result in disciplinary action.

Figure 2 – Employee COVID-19 Protocol

Ausblick Ski Club COVID-19 Protocol - Employee

Version 1.0 10-15-20

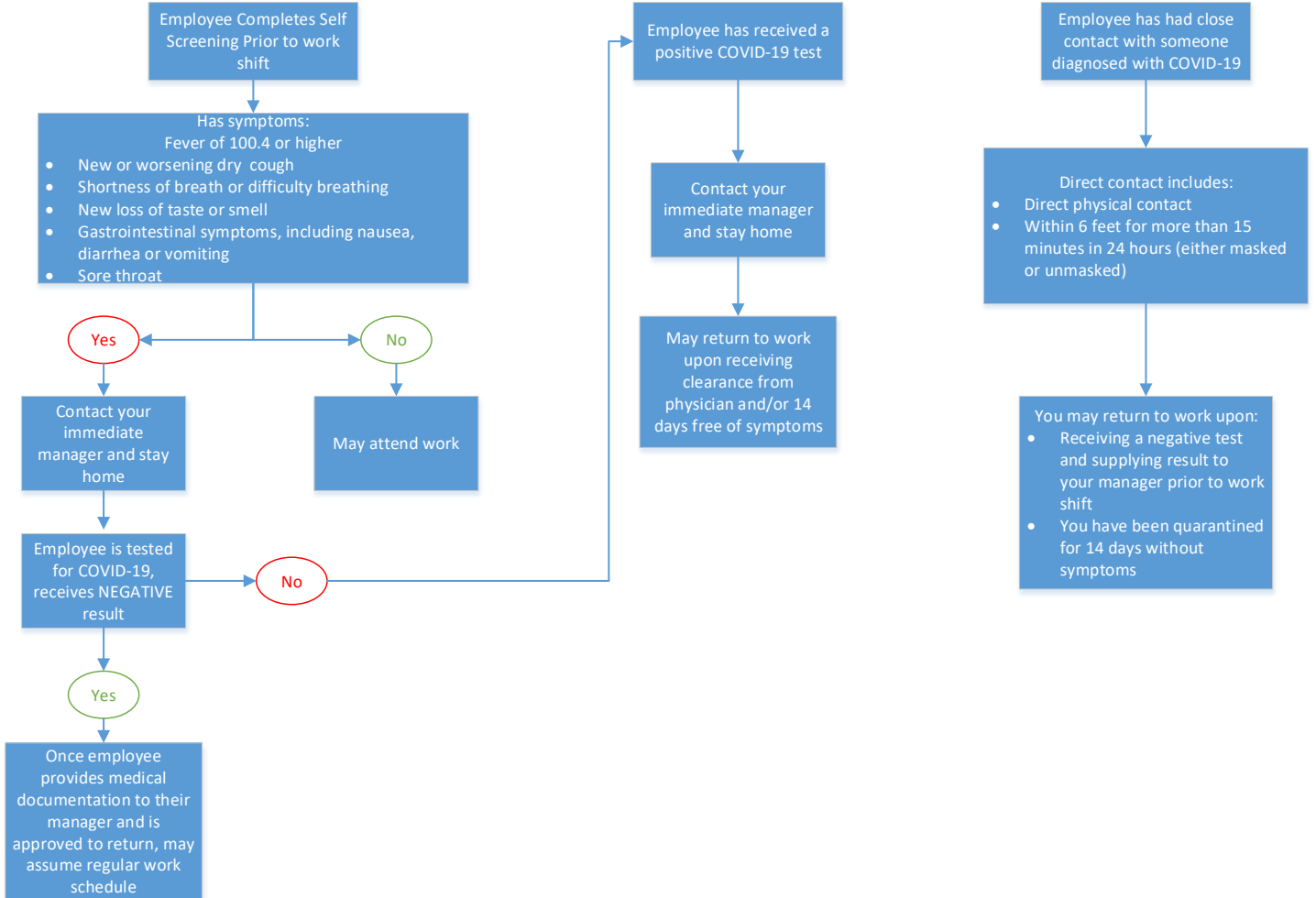


Figure 3 – Member/Guest COVID-19 Protocol

Ausblick Ski Club COVID-19 Protocol - Member
Version 1.0 10-15-20

